

Technical specifications

Roel Oostrazaal



General

Contact information

Address:

Laweiplein 1

Zip code:

9203 KL

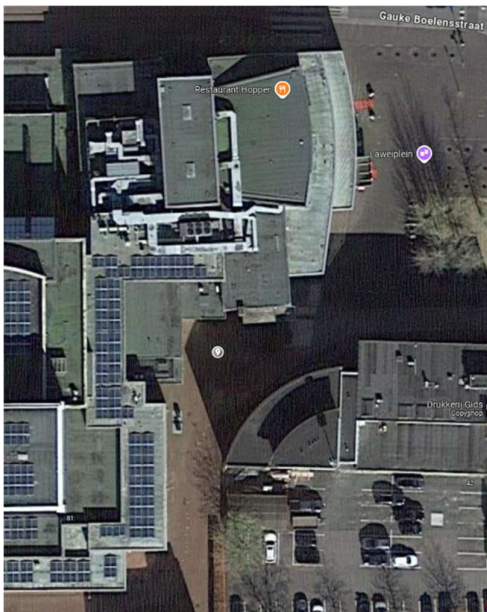
City:

Drachten

Country:

Netherlands

Address for loading dock for your navigation: Laweiplein 1, Drachten



Phone numbers

Reception:

+31 512 – 33 50 00

Box office:

+31 512 – 33 50 50

Technical department:

+31 512 - 33 50 60

Email technical department:

techniek@lawei.nl



Specifications

Theatertype: Proscenium theater
Standard start times: Evening 20:15
Matinee 14:00
Youthperformance 19:00/19:30

Seating capacity

Front hall: 207
Rear hall: 151 (Can be separated by an curtain)
Balcony: 114
Wheelchair place: 8
Total: 472

Dimensions

Stage dimensions (in meters)

Width: 14 m
Height: 12.20 m
Total depth: 9.5 m
Stage depth from center: 6.5 m
Forestage depth: 3 m
Minimum opening W x H: 8 m x 4.75 m
Maximum opening W x H: 11 m x 4.75 m
Ideal playing space width: 9 m
Orchestra Pit: None

Stage

Loading and unloading

Location: Outside
Total trucks: 1
Trailer acces: Yes
Decorlift to 1st floor 1^e floor: 5.50 x 2.20 x 2.75 m (D x W x H)

Front curtain

Available: Yes
Stage right operation: Greek: Hand
Wagner: No

Soft goods

| | |
|---------------------|-------------------------------------|
| Night blue | |
| Legs: | 4 per side, 7 m |
| Borders: | 3x 2.5 m |
| Mid stage drop: | Yes |
| Back drop: | Yes, two sections, manual operation |
| Cyclorama: | Yes |
| Black scrim: | Yes |
| Side black masking: | Yes |

Dance floor

| | |
|-------|----------------------------------------------------------|
| Black | Yes, 14m wide |
| White | Yes, (Note: Black is not available when white is in use) |

Lift

| | |
|---------------------------|--------------------------|
| Brand: | Alplift, one-person lift |
| Other climbing equipment: | Various ladders |

Communication:

| | |
|-------------------------|----------------------------------|
| ASL Intercom | |
| Fixed stations: | 3 |
| Aansluitpunten intercom | Stage right Stage left FOH |
| Listening system: | Yes, Dressingrooms, green room |
| Paging system: | No |

Fly system

Specifications

| | |
|---------------------------------------|--------------------------------------------------------------------------------------------------------------------|
| Number of bars: | 28 hand operated, 75kg 10 Electrical winches, 250kg 1 hall bar, 250kg 4 side bars, 75kg (2 left, 2 right) |
| Bar operation: | Hand |
| Bar length: | 14,5 m |
| Maximum height: | 12.20 m |
| Manufacturer: | Trekwerk |
| Operation position: | Stage Left |
| Load capacity: | 250kg, evenly distributed |
| Max. load under steel cable: | 100kg |
| Point load between steel cable: | 50kg |
| Distributed load between steel cable: | 50kg |
| Ent point load: | 50kg |
| Fly floor present: | No |

[Download the fly bar list on our website](#)

Sound

System

Meyer Sound

| | |
|----------------|---------------------------------------------------------------------|
| Hall: | 1x UPQ-D1 per side |
| Balcony: | 1x Ultra X40 per side |
| Centercluster: | 2x Ultra X40 |
| Sub: | 1x 900-LFC per side 1x 750-LFC cluster |
| Infills: | 2x Ultra X20 |
| Frontfills: | 2x UP-4slim |
| Processing: | Galileo Galaxy 816 |
| Control: | L/R, L/R/C, L/R/S, L/R/C/S |
| Desk* | |
| Analog: | Midas VeniceF 24CH Soundcraft M4 en M8 |
| Digital: | Allen&Heath QU-16 Allen&Heath QU-24 Midas Pro2c Yamaha LS9 |

Microphones: Various types of microphones available upon request, including Shure, Sennheiser, Neumann, and AKG models.

| | |
|-----------------------------|-------------------------------------------------|
| Monitoring* | |
| KS Audio passive monitoring | 2x 10" 2x 12" (Standard) 4x 12" 2x 15" |

**Use of mixing consoles, monitors, and microphones is coordinated as needed due to use in other halls.*

Miscellaneous

- 1x Yamaha C7
- 1x Yamaha P116T*
- 1x Yamaha B2*

Standard tuning at 440 Hz, with 442 Hz available upon request.

*Available upon request

Light

Desk

Type: Ma Lighting DOT2*
Zero88 FLX S24

Control: DMX

Dimmers

Brand: Compulite
Number of channels: 160
Mobile: 2x 24
DMX free from 140

Loose connections

Stage: Stage Right 20x 5kW
Stage Left 20x 5kW

Manteau: Stage Right 1x 2.5kW
Stage Left 3x 2.5kW

Distribution

Front bridge: 15x 2kW Niethammer zoomprofiel HPZ 215D 15-40°
Covings per side: 2x 2kW Niethammer zoomprofiel HPZ 215D 15-40°
Portal bridge: 8x 2kW ADB PC 8-48°
6x 1kW Niethammer zoomprofiel HPZ 115 15-38°
Under portal: 5x 1kW Strand PC
Manteau per side: 2x 1kW Niethammer zoomprofiel HPZ 115 15-38°
2x 1kW Strand PC
Cyclorama: 5x 4 color 1kW

Miscellaneous

Loose equipment*
4x Sixbar PAR64 CP62
8x Par64 CP62
6x 1kW Niethammer HPZ115 15-38°
10x 1kW Selecon PC
40x Chauvet DJ Slimpar Q12 USB
6x Chauvet Rogue R2x Zoom wash 12-49°

**Use of loose lighting equipment is coordinated as needed duet o use in other halls*

Connections

Power supply

Stage Right: 1x 32 ampère

Stage left: 1x 63 ampère

Data

DMX

Stage Right: Patch

Stage Left: 2x I/O

FOH: 2x I/O

CAT 5e: 4x FOH to Stage Left (Direct)
4x FOH to Stage Right (Direct)

Video

Equipment

Projectors*: Panasonic PT-RZ970, 10.000 lux, 16:10, 1920x1200
Panasonic PT-MZ670, 6500lux, 16:10, 1920x1200
Panasonic PT-VZ850, 5000lux, 16:10, 1920x1200

Videomixers*: Roland VR-50HD
Roland V-40HD
Roland V-60HD
Atem Mini Pro

Projection screens*: Various projections screens available
3x 55" TV
2x 86" Touchscreen TV

** Use of loose video equipment is coordinated as needed due to use in other halls*

Other:

Dressingrooms

4 dressing rooms at stage level, dressingroom 12 to 15

| Dressingroom | Makeup stations | Toilet and douche? |
|--------------|-----------------|--------------------|
| 12 | 8 | No |
| 13 | 4 | No |
| 14 | 8 | No |
| 15 | 3 | Yes |

The Roel Oostrazaal has a total of 4 dressing rooms, one of which has its own shower and toilet. The other dressing rooms have shared showers and toilets nearby. Additionally, there are mirrors, washbasins, and lockers available. For other facilities such as an ironing board, iron, beds, and towels, requests can be made via facilitair@lawei.nl. The dressing rooms can be locked using a card, which can be requested from the technical staff.

In the artist lounge, you can eat, drink, and cook. Our kitchen is equipped with standard appliances, including a combination microwave, refrigerator, and an induction cooktop. There is CEE power supply (32A/400V or 16A/230V) available for your own kitchen equipment.

The maximum passageway to the artist lounge for personal equipment is 0.90 x 1.97 m (W x H). Access from the outside is also possible; please ask one of the technicians for assistance. The maximum passageway in that case is 1.20 x 2.35 m (W x H).

It is **not permitted** to charge electric cars in the loading dock! Charging facilities are available at Kiryat Onoplein next to the building.

If you have any questions after reading this document, please contact the Coordinator/Technical Planner, Wiljanco de Jonge, at 0512 – 33 50 60 or via email at techniek@lawei.nl.