



Laweiplein 1
 9203 KA Drachten
 0512 33 55 36 Algemeen
 0512 33 50 60 Techniek
 techniek@lawei.nl

Roel Oostrazaal: technical specifications, measurements, facilities, drawings and fly bar list

Stage

Width	14m
Height	12.20m
Depth including proscenium	9.5m
Depth excluding proscenium	6.5m
Depth proscenium	3m
Proscenium arch minimum w x h	8 x 4.75m
Proscenium arch maximum w x h	11 x 4.75m
Best practice width	9m
Orchestra pit	no
Firecurtain	no
Loading dock	Navigation address: Laweiplein 1
Loading elevator	5.50 x 2.20 x 2.75m (d x w x h)

Fly bars

Length	12m
Hand operated bars	28 75kg
Motors	10 200kg
Advance bar	1 250kg
Side fly bars: 2 left and 2 right	4 75kg

Heights

Side bridges	7m
Proscenium arch	4.75m
Lowest point wings	3.5m

Soft goods

Colour is night blue	
4 sets of legs	8 m
3 borders	2.5 m
1 black backdrop on rail	
1 white backdrop	
1 black gauze	
1 night blue drop	

Seating

Front auditorium	207	
Rear auditorium	151	There is a division curtain
Wheelchair	8	
Balcony	114	

Lighting

Hall catwalk	19x	2 kw Niethammer zoomprofile	HPZ 215	15-40°
Portal	8x	2 kw ADB PC	8-48°	
	6x	1 kw Niethammer zoomprofile	HPZ 115	15-38°
Onder portaal	5x	1 kw Strand PC		
Manteau	2x	1 kw Niethammer zoomprofile	HPZ 115	
	2x	1 kw Strand PC		
Horizon	5x	4 colours 1 kw		
Followspot	1x	400 w HMI		
Lighting desk		Compulite Spark-top		

Additional lighting

Sixbar PAR64 CP62	4	
Par64 CP62	8	
2 kw Selecon PC	10	4.5-62°
1 kw Niethammer HPZ115	6	15-38°
Flat Par Led QA12X	16	12x 5 watt RGBA
OXO Colorbeam 7fcw	8	7x 5 watt RGBW

Use of additional lighting to be discussed (also used for other rooms)

Power

Stageright	1x 32 ampère/380 volts
Stageleft	1x 63 ampère/380volts

Sound

Room system

Acoustic Line

Main PA	2x CT 12 per side
Center	2x CT 12
Sub	2x CB 215
Processing	Xilica XP 4080
Inputs	L/R, L/R/Sub or L/R/Center/Sub

Monitor*

KS audio passive monitors: 10 inch, 12 inch en 15 inch

Mengtafel*

Analog Midas VeniceF 24 ch, Soundcraft M4 en M8
Digital Allen&Heath QU-16, Midas Pro2c, Yamaha LS9

Microphones wireless*

8x Sennheiser EW300 G3 Frequency range B 626-668
8x e865 Handheld
8x SK300 Beltpack
4x DPA d:fine
6x DAP EH 2
2x Sennheiser MKE2 black

Microphones and DI's*

Shure SM52b, SM56b, SM57, SM57b, SM58, SM58b, SM87, SM91b
Sennheiser 421, e604, e906, ME35, ME66, MD 808-U
Neumann KM184, KMS105
AKG C214B, C414B, C452 EB, D112
Radial J48, JDI Duplex
Klark Teknik DN100
Arx Audibox usb DI

*Use of desks, monitors and mics to be discussed (also used for other rooms)

Dressing rooms and artist green room

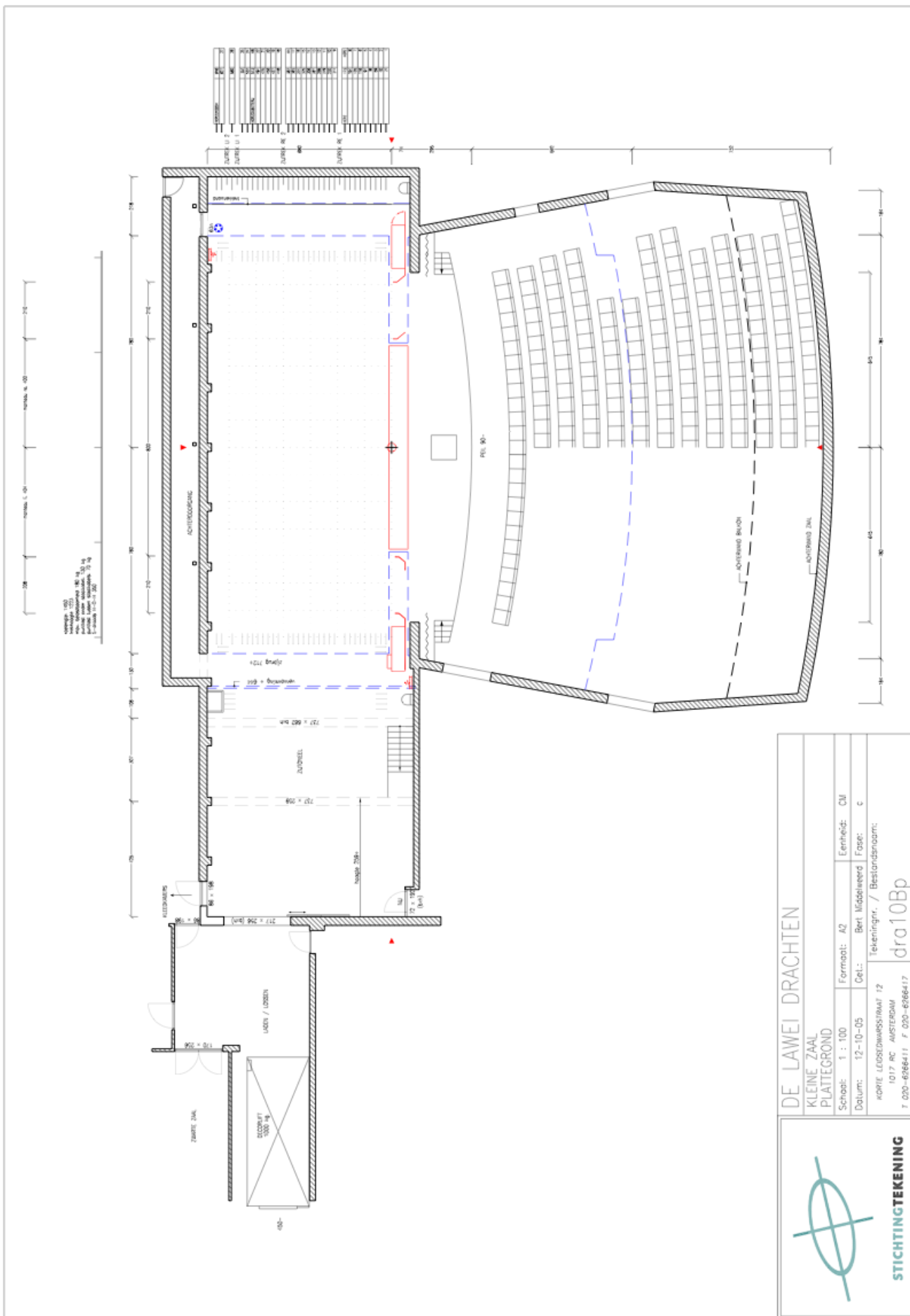
The Big Hall is equipped with 4 dressing rooms, one featuring a private shower and toilet
For the other rooms showers and toilets are close by
Each room includes mirrors with lighting, lockers, a sink and 4 to 8 dressing stations

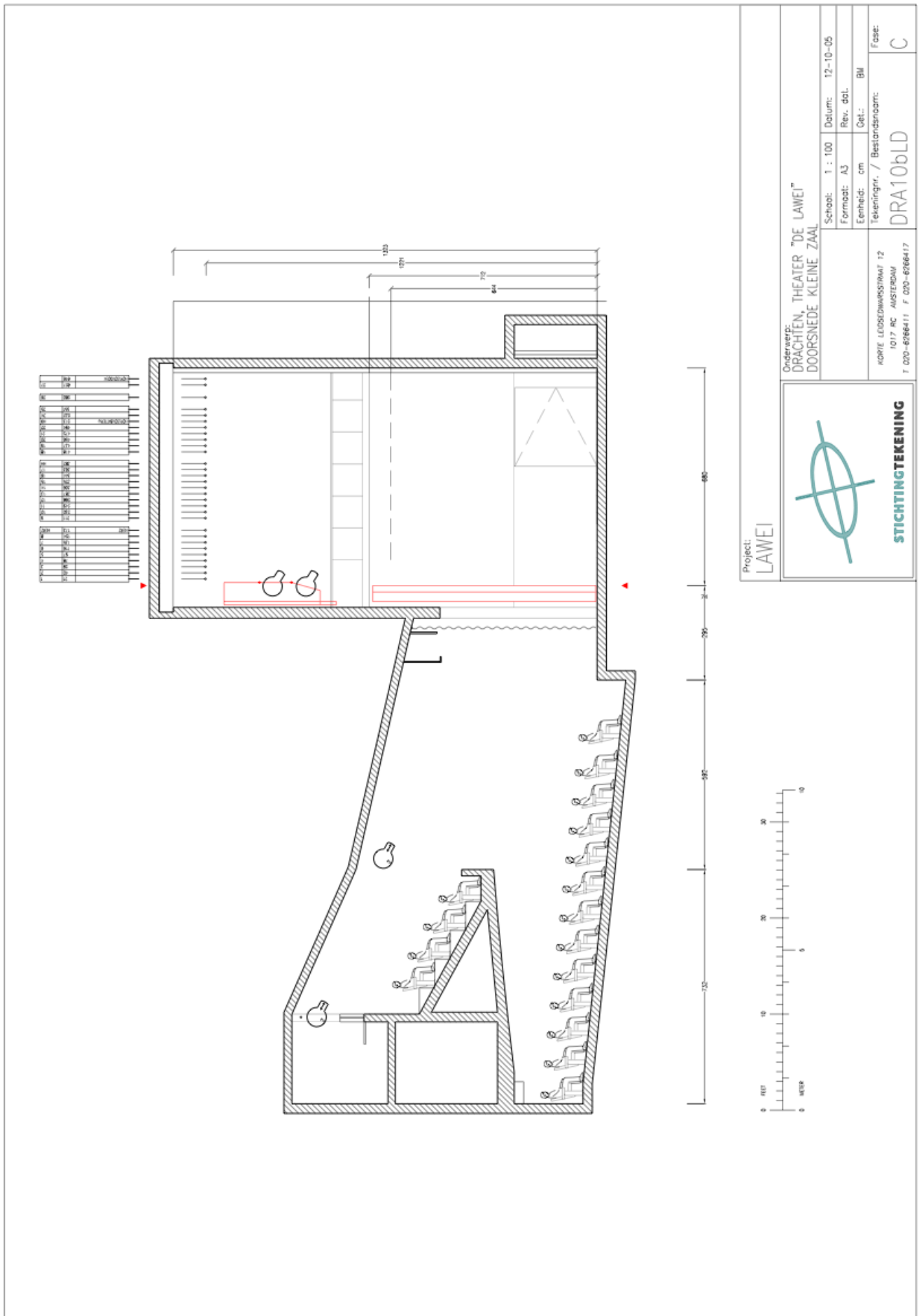
The artist greenroom is available for eating, drinking and preparing food
You can make use of plates & cutlery, an oven, microwave and an electric stove
There is power available for additional kitchen equipment (32a/380v or 16a/220v)

Fly bar list ROEL OOSTRAZAAL

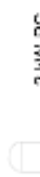
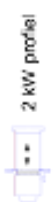
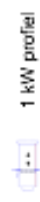
Curtain -0.85m before downstagecenter (see drawing)

fly bar nr	depth in cm	remark
1	21	
2	40	
3	59	
4	78	
5	97	
6	116	
7	135	
8	154	
H	173	
R1		side bar stage left
9	211	
10	230	
11	249	
12	268	
13	287	
14	306	
15	325	
16	344	
17	363	
HH	381	
R2		side bar stage left
18	418	
19	437	
20	456	
21	475	
22	494	
HB	513	backdrop lights
24	532	
25	551	
L1		side bar stage right
26	589	
L2		side bar stage right
27	627	black backdrop on rail
28	646	white backdrop





Lawei Roel Oostrazaal



Zaalficht: 91, 92, 93

KLEUREN

- 91
- 92
- 93
- 94
- 95
- 96
- 97
- 98
- 99
- 100
- 101
- 102
- 103
- 104
- 105
- 106
- 107
- 108
- 109
- 110
- 111
- 112
- 113
- 114
- 115
- 116
- 117
- 118
- 119
- 120
- 121
- 122
- 123
- 124
- 125
- 126
- 127
- 128
- 129
- 130
- 131
- 132
- 133
- 134
- 135
- 136
- 137
- 138
- 139
- 140
- 141
- 142
- 143
- 144
- 145
- 146
- 147
- 148
- 149
- 150
- 151
- 152
- 153
- 154
- 155
- 156
- 157
- 158
- 159
- 160
- 161
- 162
- 163
- 164
- 165
- 166
- 167
- 168
- 169
- 170
- 171
- 172
- 173
- 174
- 175
- 176
- 177
- 178
- 179
- 180
- 181
- 182
- 183
- 184
- 185
- 186
- 187
- 188
- 189
- 190
- 191
- 192
- 193
- 194
- 195
- 196
- 197
- 198
- 199
- 200

