

# Technical specifications

## *Roel Oostrazaal*

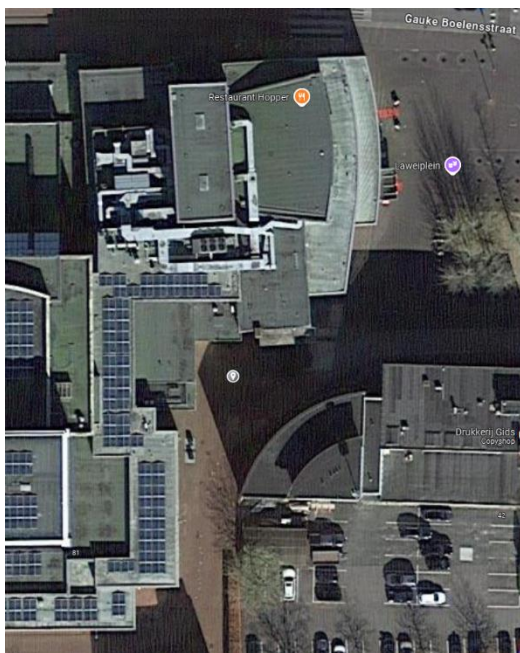


### General

#### Contact information

Address: Laweiplein 1  
Zip code: 9203 KL  
City: Drachten  
Country: Netherlands

Address for loading dock for your navigation: Laweiplein 1, Drachten



### Phone numbers

Reception: +31 512 – 33 50 00  
Box office: +31 512 – 33 50 50  
Technical department: +31 512 - 33 50 60  
Email technical department: [techniek@lawei.nl](mailto:techniek@lawei.nl)

## Specifications

Theatertype:	Proscenium theater
Standard start times:	Evening 20:15
	Matinee 14:00
	Youthperformance 19:00/19:30

## Seating capacity

Front hall:	207
Rear hall:	151 (Can be separated by an curtain)
Balcony:	114
Wheelchair place:	8
Total:	472

## Dimensions

### Stage dimensions (in meters)

Width:	14 m
Height:	12.20 m
Total depth:	9.5 m
Stage depth from center:	6.5 m
Forestage depth:	3 m
Minimum opening W x H:	8 m x 4.75 m
Maximum opening W x H:	11 m x 4.75 m
Ideal playing space width:	9 m
Orchestra Pit	None

## Stage

### Loading and unloading

Location:	Outside
Total trucks:	1
Trailer acces:	Yes
Decorlift to 1st floor 1 <sup>e</sup> floor:	5.50 x 2.20 x 2.75 m (D x W x H)

### Front curtain

Available:	Yes
Stage right operation:	Greek: Hand
	Wagner: No

**Soft goods**

Night blue	
Legs:	4 per side, 7 m
Borders:	3x 2.5 m
Mid stage drop:	Yes
Back drop:	Yes, two sections, manual operation
Cyclorama:	Yes
Black scrim:	Yes
Side black masking:	Yes

**Dance floor**

Black	Yes, 14m wide
White	Yes, (Note: Black is not available when white is in use)

**Lift**

Brand:	Alplift, one-person lift
Other climbing equipment:	Various ladders

**Communication:**

ASL Intercom	
Fixed stations:	3
Aansluitpunten intercom	Stage right
	Stage left
	FOH
Listening system:	Yes, Dressingrooms, green room
Paging system:	No

**Fly system****Specifications**

Number of bars:	28 hand operated, 75kg
	10 Electrical winches, 250kg
	1 hall bar, 250kg
	4 side bars, 75kg (2 left, 2 right)
Bar operation:	Hand
Bar length:	14,5 m
Maximum height:	12.20 m
Manufacturer:	Trekwerk
Operation position:	Stage Left
Load capacity:	250kg, evenly distributed
Max. load under steel cable:	100kg
Point load between steel cable:	50kg
Distributed load between steel cable:	50kg
Ent point load:	50kg
Fly floor present:	No

[Download the fly bar list on our website](#)

## Sound

### System

Hall:  
Balcony:  
Centercluster:  
Sub:

Infills:  
Frontfills:  
Processing:  
Control:

Desk\*  
Analog:

Digital:

### Meyer Sound

1x UPQ-D1 per side  
1x Ultra X40 per side  
2x Ultra X40  
1x 900-LFC per side  
1x 750-LFC cluster  
2x Ultra X20  
2x UP-4slim  
Galileo Galaxy 816  
L/R, L/R/C, L/R/S, L/R/C/S

Midas VeniceF 24CH  
Soundcraft M4 en M8

Allen&Heath QU-16  
Allen&Heath QU-24  
Midas Pro2c  
Yamaha LS9

*Microphones: Various types of microphones available upon request, including Shure, Sennheiser, Neumann, and AKG models.*

Monitoring\*  
KS Audio passive monitoring

2x 10"  
2x 12" (Standard)  
4x 12"  
2x 15"

*\*Use of mixing consoles, monitors, and microphones is coordinated as needed due to use in other halls.*

### Miscellaneous

1x Yamaha C7  
1x Yamaha P116T\*  
1x Yamaha B2\*

Standard tuning at 440 Hz, with 442 Hz available upon request.

\*Available upon request

## Light

### Desk

Type: Ma Lighting DOT2\*  
Zero88 FLX S24

Control: DMX

### Dimmers

Brand: Compulite  
Number of channels: 160  
Mobile: 2x 24  
DMX free from 140

### Loose connections

Stage: Stage Right 20x 5kW  
Stage Left 20x 5kW

Manteau: Stage Right 1x 2.5kW  
Stage Left 3x 2.5kW

### Distribution

Front bridge:	15x	2kW Niethammer zoomprofiel HPZ 215D 15-40°
Covings per side:	2x	2kW Niethammer zoomprofiel HPZ 215D 15-40°
Portal bridge:	8x	2kW ADB PC 8-48°
	6x	1kW Niethammer zoomprofiel HPZ 115 15-38°
Under portal:	5x	1kW Strand PC
Manteau per side:	2x	1kW Niethammer zoomprofiel HPZ 115 15-38°
	2x	1kW Strand PC
Cyclorama:	6x	Chauvet Ovation CYC 3FC RGBAL

### Miscellaneous

Loose equipment\*

4x	Sixbar PAR64 CP62
8x	Par64 CP62
6x	1kW Niethammer HPZ115 15-38°
10x	1kW Selecon PC
40x	Chauvet DJ Slimpar Q12 USB
6x	Chauvet Rogue R2x Zoom wash 12-49°

*\*Use of loose lighting equipment is coordinated as needed duet o use in other halls*

## Connections

### Power supply

Stage Right: 1x 32 ampère

Stage left: 1x 63 ampère

### Data

DMX

Stage Right: Patch

Stage Left: 2x I/O

FOH: 2x I/O

CAT 5e: 4x FOH to Stage Left (Direct)  
4x FOH to Stage Right (Direct)

## Video

### Equipment

Projectors\*: Panasonic PT-RZ970, 10.000 lux, 16:10, 1920x1200  
Panasonic PT-MZ670, 6500lux, 16:10, 1920x1200  
Panasonic PT-VZ850, 5000lux, 16:10, 1920x1200

Videomixers\*: Roland VR-50HD  
Roland V-40HD  
Roland V-60HD  
Atem Mini Pro

Projection screens\*: Various projections screens available  
3x 55" TV  
2x 86" Touchscreen TV

*\* Use of loose video equipment is coordinated as needed due to use in other halls*

**Other:**

Dressingrooms

4 dressing rooms at stage level, dressingroom 12 to 15

Dressingroom	Makeup stations	Toilet and douche?
12	8	No
13	4	No
14	8	No
15	3	Yes

The Roel Oostrazaal has a total of 4 dressing rooms, one of which has its own shower and toilet. The other dressing rooms have shared showers and toilets nearby. Additionally, there are mirrors, washbasins, and lockers available. For other facilities such as an ironing board, iron, beds, and towels, requests can be made via [facilitair@lawei.nl](mailto:facilitair@lawei.nl). The dressing rooms can be locked using a card, which can be requested from the technical staff.

In the artist lounge, you can eat, drink, and cook. Our kitchen is equipped with standard appliances, including a combination microwave, refrigerator, and an induction cooktop. There is CEE power supply (32A/400V or 16A/230V) available for your own kitchen equipment.

The maximum passageway to the artist lounge for personal equipment is 0.90 x 1.97 m (W x H). Access from the outside is also possible; please ask one of the technicians for assistance. The maximum passageway in that case is 1.20 x 2.35 m (W x H).

It is **not permitted** to charge electric cars in the loading dock! Charging facilities are available at Kiryat Onoplein next to the building.

If you have any questions after reading this document, please contact the Coordinator/Technical Planner, Wiljanco de Jonge, at 0512 – 33 50 60 or via email at [techniek@lawei.nl](mailto:techniek@lawei.nl).