

Technical details

Main Hall

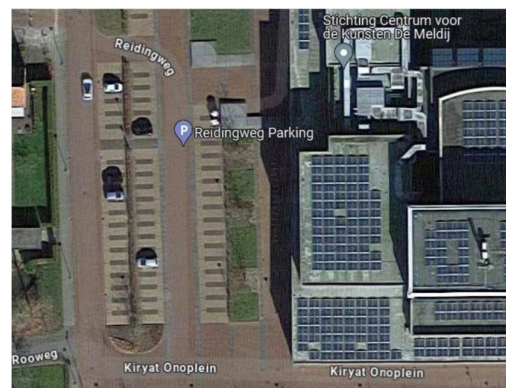


General

Contactgegevens

Adress:	Laweiplein 1
Postal Code:	9203 KL
City:	Drachten
Country:	Netherlands

Address for loading dock (for navigation): Reidingweg 1, Drachten



Phone numbers

Reception:	+31 512 – 33 50 00
Box office:	+31 512 – 33 50 50
Technical department:	+31 512 - 33 50 60
Technical department email:	techniek@lawei.nl



Specifications

Theater type:	Proscenium theater
Standard start time:	Evening 20:00 Matinee 14:00 Youth performance 19:00/19:30

Seating capacity

Orchestra pit:	63
Front auditorium:	324
Rear auditorium (under balcony)	215
Balcony:	369
Wheelchair spaces:	6
Totaal:	908

Special notes:	The first 3 rows are on the orchestra pit and can be retracted.
----------------	---

Dimensions

Stage measurements (in m)

Width:	20 m
Height:	19.30 m under flybar
Total width:	38 m
Total depth:	26 m
Stage Depth from center stage:	13.5 m
Depth proscenium:	2 m
Minimum opening W x H:	10 m x 4 m
Maximum opening W x H:	20 m x 11.20 m
Ideal playing area:	11 m
Orchestra pit W x D:	12.90 m x 7.50 m

[See floor plan on our website](#)

Stage

Loading and unloading

Description:	Indoor loadingdock
Number of trucks:	1 to 2 (Used jointly with the Small Hall)
Accessible by trailer:	Yes
Parking space dimensions:	17.16 x 8.38 x 4.31 (L x W x H)
Door to stage:	3 x 3.5 (W x H)

Front curtain

Available:	Yes
Control from stage left:	Greek: Manual Wagner: No

Soft goods

Night blue	
Legs:	7 per side, 9,8 m
Borders:	6x 3 m high
Border:	1x 5 m high
Mid-stage curtain:	Yes
Backdrop:	Yes, in 2 parts, manually operated
Cyclorama:	Yes
Black scrim:	Yes
White scrim:	Yes
Black side masking:	Yes

Dancefloor

Black	Yes, 15m wide
White	Yes, (Note, black floor not available when white is in use)

Hoogwerker

Lift:	Alplift, Single-person lift
Other climbing materials:	Various ladders

Communication:

Clear-Com	
Fixed stations:	5
Wireless:	4
Connections:	Light booth FOH Stage Left Stage Right Followspot booths Flybar Stage Left Main curtain, stage left
Monitoring:	Yes, in dressing rooms and green room
PA system:	Yes, from Stage Left to dressing rooms

Fly system

Specifications

Number of fly bars:	2 Point hoists 1 Room flybar 1 Portal bridge 69 flybars (6 of which are acoustic panel) 4 Side fly bars (2 left, 2 right) 1 auditorium bar 8 Chain hoists
Control system:	TNM, operator by the theatre
Length of flybar:	20 m
Length of proscenium bar:	20 m
Length of sidebar:	13 m
Maximum fly height:	19.30 m
Manufacturer:	Trekwerk
Control position:	Stage Left
Maximum speed:	Standard 1,2 m/s Maximum 1,8 m/s Acoustic panel maximum 0,8 m/s
Load capacity:	500kg evenly distributed load Acoustic panel 1600kg
Total roof load:	20T
Maximum load under steel cable:	250kg
Point load between steel cables:	250kg
Distributed load between steel cables:	300kg
Point load at end of fly bar:	75kg
Maximum load chain hoists	1000kg
Fly gallery available:	Yes

[Download the rigging list from our website](#)

Sound

Auditorium System

Auditorium:
Balcony:
Center cluster:
Sub:

Infills:
Frontfills:
Processing:
Routing:

Desk*
Analog:

Digital:

Meyer Sound

7x Lina per side
5x Lina per side
3x UPJ-1P
3x 750-LFC per side, 2x 600-HP per side
upon request
2x UPJunior-XP
4x MM4-XP
Galileo Galaxy 816
L/R, L/R/C, L/R/S, L/R/C/S

Midas VeniceF 24CH
Soundcraft M4 en M8

Allen&Heath QU-16
Allen&Heath QU-24
Midas Pro2c
Yamaha LS9

Microphones*: Various microphones available upon request, including brands like Shure, Sennheiser, Neumann, and AKG.

Monitors*

KS Audio passive monitors:

2x 10"
4x 12"
2x 15"

**Note:* Usage of mixing consoles, monitors, and microphones is subject to coordination with other venues.

Grand Pianos*

1x Yamaha C7
1x Yamaha P116T*
1x Yamaha B2*

Standard tuning at 440Hz, tuning to 442Hz available upon request.

* Pianos available upon request.

Lighting

Desk

Type: Ma Lighting DOT2*
Zero88 FLX S24

Control protocol: DMX

Dimmers

Brand: Compulite
Number of channels: 160
Mobile dimmers: 2x 24 Channels (max 2,5kW per channel)
DMX free from: 254

Dimmer connections

Stage: Left 20x 5kW
Right 20x 5kW

Manteau: Links 1x 2.5kW
Rechts 3x 2.5kW

Lights

Bridge: 20x 2kW Niethammer zoomprofile HPZ 211D 10-22°
20x 2kW Robert Juliat 712SX 15-40°
Portalbrug: 12x 2kW ADB PC 8-48°
14x 1kW Niethammer zoomprofile HPZ 115 15-38°
Manteau: 7x 1kW Niethammer zoomprofile HPZ 115 15-38°
Horizon: 6x 4 colors 1kW
Followspot 2x Robert Juliat Korrigan 1200W HMI 1-14.5°

Miscellaneous

Loose equipment*

6x	Sixbar PAR64 CP62
12x	Par64 CP62
11x	2kW ADB PC 4.5-62°
8x	Niethammer HPZ115 15-38°
40x	Chauvet DJ Slimpar Q12 USB
6x	Chauvet Rogue R2x Zoom wash 12-49°

* Note: Use of loose lighting equipment is subject to coordination with other venues.

Connections

Power supply

Stage right	1x	63 ampère
	2x	125 ampère
Stage left	2x	125 ampère
	2x	32 ampère

Data

DMX	
Stage Right	Patch
Stage left	1x in en 1x out
FOH	4x I/O
Light booth	2x I/O

CAT 5e:	4x	FOH to Stage right (Direct)
	4x	FOH to Stage left (Direct)
SDI 3G	3x	FOH to Stage right (Direct)

Video

Equipment

Projectors*:
Panasonic PT-RZ970, 10.000 lux, 16:10, 1920x1200
Panasonic PT-MZ670, 6500lux, 16:10, 1920x1200
Panasonic PT-VZ850, 5000lux, 16:10, 1920x1200

Videomixers*:
Roland VR-50HD
Roland V-40HD
Roland V-60HD
Atem Mini Pro

Projection screens*: Diverse projectieschermen aanwezig
3x 55" TV
2x 86" Touchscreen TV

** Note: Use of loose video equipment is subject to coordination with other venues.*

Other facilities:

Dressingrooms

4 dressing rooms on stage level, dressing room 1 to 4
3 dressing rooms on the 1st floor, dressing room 5 to 7

Dressingroom	Mirrors	Toilet and douche?
1	3	Yes
2	5	No
3	2	No
4	6	No
5	9	No
6	9	No
7	6	No

The Main Hall has 7 dressing rooms, 1 of which has its own shower and toilet. The other dressing rooms share showers and toilets nearby. There are also mirrors, sinks, and lockers available. Additional facilities, such as an ironing board, iron, beds, and towels, can be requested via facilitair@lawei.nl. The dressing rooms can be locked with a card available upon request from the technical team.

In the green room, you can eat, drink, and cook. Our kitchen is equipped with standard appliances, such as a combination microwave, refrigerator, and induction cooktop. There is CEE power supply (32A/400V or 16A/230V) for personal kitchen equipment..

The maximum passage to the green room for personal equipment is: 0.90 x 1.97 (W x H). Access from the outside is also possible; please ask one of the technicians. The maximum passage in that case is 1.20 x 2.35 (W x H).

Note: Charging electric vehicles in the loading dock **is not permitted!** Charging stations are available at Kiryat Onoplein next to the building.

If you have any questions after reading this document, please contact the Technical Coordinator/Planner, Wiljanco de Jonge, at +31 512 – 33 50 60 or via email at techniek@lawei.nl.