



Laweiplein 1  
 9203 KA Drachten  
 0512 33 55 36 Reception  
 0512 33 50 60 Technical coordinator  
 techniek@lawei.nl

## **Big Hall (Grote Zaal) : technical specifications, measurements, facilities drawings and fly bar list**

### **Stage**

Width	20 m
Height	19.50 m
Width stage including wings	38 m
Depth stage including backstage	26 m
Depth proscenium	2 m
Proscenium arch minimum w x h	10 m x 4 m
Proscenium arch maximum w x h	20 m x 11.20 m
Best practice width	12 m
Orchestra pit	12.90 x 7.50m
Loading/unloading	loading dock with space for 2 trailers

### **Fly bars and catwalks**

Length	20 m		
Number	68	500 kg	
Chainhoists	8	1000kg	
Electric winch	2	250kg	
Room fly bar	1	1500kg	-1.74m
Advance fly bar	1	500kg	-0.98m
Side fly bars left and right	13m	500kg	2 per side
Control flybars: Trekwerk			

All catwalks (sides, back,proscenium arch) 9.5 m  
 PA in chainhoist left and right to room fly bar

### **Soft goods**

Colour is nightblue		
7 sets of legs	9.5 m	
6 borders	3.5 m	
1 border	5 m	
1 drop black	9.5m	open/close: horizontal/vertical
1 drop	9.5m	open/close: horizontal
1 Gauze black	9.5m	
1 Gauze white	9.5m	

## Seating

Front auditorium	324	
Orchestra pit	63	
Rear auditorium (under balcony)	215	There is a division curtain
Wheelchair	8	
Balcony	369	
Total	908	

## Lighting

Hall catwalk	20x 2 kw Niethammer zoomprofile HPZ 211D	10-22°
	20x 2 kw Robert Juliat 714SX	15-40°
Proscenium arch	12x 2 kw ADB PC	8-48°
	14x 1 kw Niethammer zoomprofile HPZ 115	15-38°
	7x 1 kw Niethammer zoomprofile HPZ 115	15-38°
Side catwalks	20x 2 kw Niethammer zoomprofile HPZ 215	15-40°
Horizon	6x 4 colours	1 kw
Followspot	2x Robert Juliat Korrigan	1200w HMI
Hazer	1x Swefog Xeon II Intellahazer	
Lighting desk	Compulite Micron	4D

## Additional lighting

Sixbar PAR64 CP62	6	
Par64 CP62	20	
2 kw Selecon PC	12	4.5-62°
1 kw Niethammer HPZ115	8	15-38°
Flat Par Led QA12X	16	12x 5 watt RGBA
OXO Colorbeam 7fcw	8	7x 5 watt RGBW

Use of additional lighting to be discussed (also used for other rooms)

## Power

Stageright	1 x 63 ampère
	2 x 125 ampère
Stageleft	2 x 125 ampère
	2 x 32 ampère

## Intercom

Wireless	1x Telex BTR-700 with 4x TR-700 beltpack (1 channel)
Frequency range	558-569 and 704-721 Mhz
Wired intercom	5x ASL BS15 beltpack (1 channel)

## Sound

### Roomsystem

Main floor	7x Lina per side
Main balcony	5x Lina per side
Center	3x UPJ-1P
Sub	3x 750-LFC per side, 2 stacked, 1 flown
Infills	2x UPJunior-XP
Frontfills	4x MM4-XP
Processing	Galileo Galaxy 816
Inputs	L/R, L/R/Sub or L/R/Center/Sub

### Meyer Sound

Main floor	7x Lina per side
Main balcony	5x Lina per side
Center	3x UPJ-1P
Sub	3x 750-LFC per side, 2 stacked, 1 flown
Infills	2x UPJunior-XP
Frontfills	4x MM4-XP
Processing	Galileo Galaxy 816
Inputs	L/R, L/R/Sub or L/R/Center/Sub

### Monitor\*

KS audio passive monitors: 10 inch, 12 inch en 15 inch

### Desk\*

Analog	Midas VeniceF 24 ch, Soundcraft M4 en M8
Digital	Allen&Heath QU-16, Midas Pro2c, Yamaha LS9

### Microphones wireless\*

8x	Sennheiser EW300 G3	Frequency range B 626-668 Mhz
8x	e865	Handheld
8x	SK300	Beltpack
4x	DPA D: fine	
6x	DAP EH 2	
2x	Sennheiser MKE2	black

### Microphones and DI's\*

Shure	SM52b, SM56b, SM57, SM57b, SM58, SM58b, SM87, SM91b
Sennheiser	421, e604, e906, ME35, ME66, MD 808-U
Neumann	KM184, KMS105
AKG	C214B, C414B, C452 EB, D112
Radial	J48, JDI Duplex
Klark Teknik	DN100
Arx	Audibox usb DI

\*Use of desks, monitors and mics to be discussed (also used for other rooms)

## **Acoustic panels**

The Big Hall can be used with acoustic panels surrounding the stage to create some reverberation for unamplified music

Use of the fly bars is limited in this situation (see fly bar list on page 9)

## **Dressing rooms and artist green room**

The Big Hall is equipped with 7 dressing rooms, one featuring a private shower and toilet  
For the other rooms showers and toilets are close by

Each room includes mirrors with lighting, lockers, a sink and 4 to 8 dressing stations

Large costume racks can be placed in the hallway outside the rooms

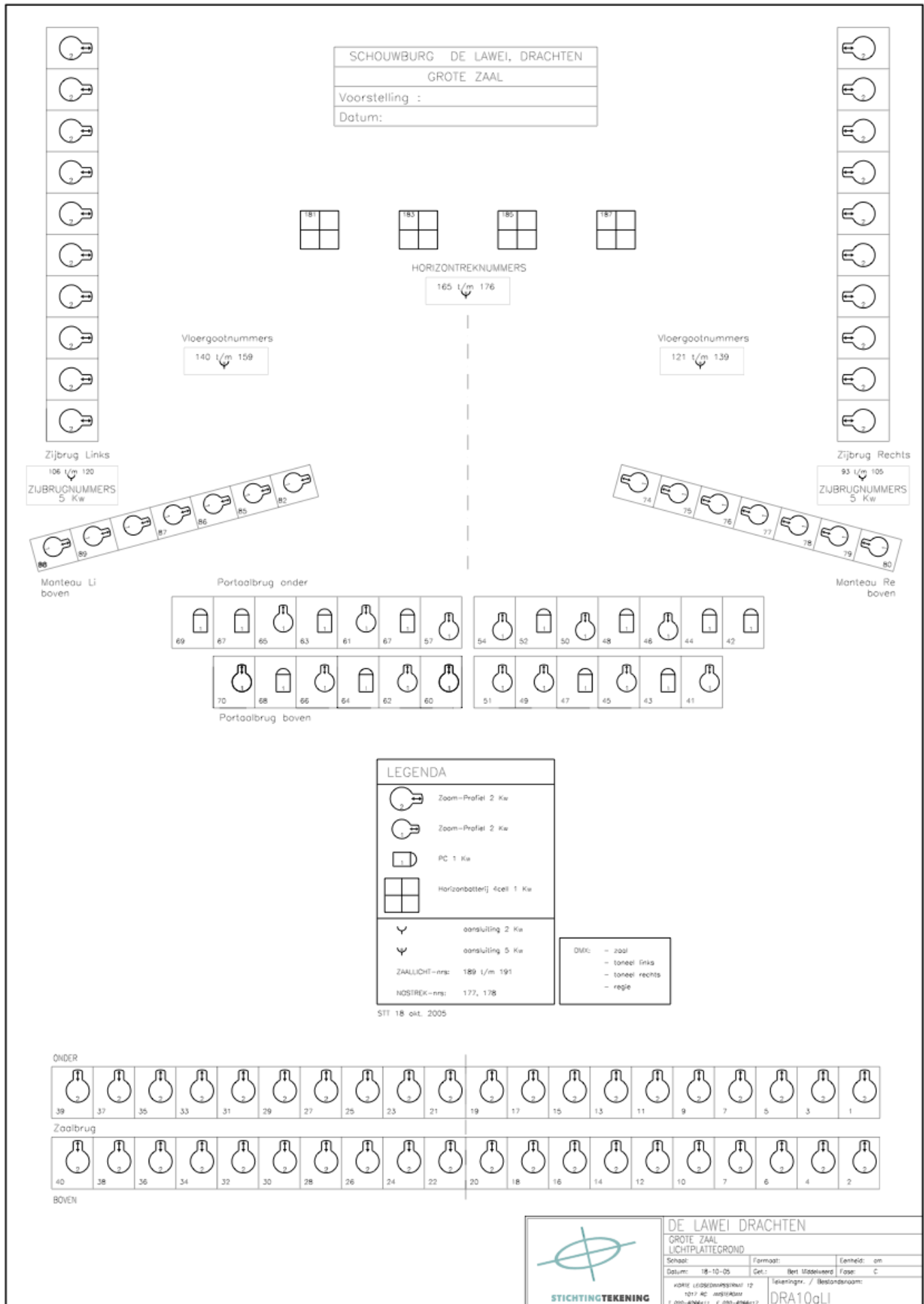
The artist greenroom is available for eating, drinking and preparing food

You can make use of plates & cutlery, an oven, microwave and an electric stove

There is power available for additional kitchen equipment (32a/380v or 16a/220v)







Big Hall (Grote Zaal) Lawei Drachten									
Date			Flybar length		2000 cm				
Company			Max height base of bar		1930 cm				
Show			Max load		500kg				
			Max point load		250kg				
			Speed		max 1,8 meter p/s				
			Systeem:		Trekwerk				
depth in cm	motor number	axis number	Contents	low	mark 1	mark 2	mark 3	high	
-903	zaal 2								cm
-174	zaal 1		audio						cm
-98	sluier101		advance fly bar						cm
45	2		acoustic panel parking bar (not available)						cm
65	3								cm
85	4								cm
105	5								cm
125	6								cm
145	7								cm
165	8								cm
185	9								cm
205	10								cm
225	11								cm
245	12								cm
265	13								cm
285	14								cm
305	15		acoustic panel (use to be discussed)*						cm
325	16								cm
345	17								cm
365	18								cm
385	19		acoustic panel (use to be discussed)*						cm
405	20								cm
425	21								cm
445	22								cm
465	23								cm
485	24								cm
505	25								cm
525	26								cm
545	27								cm
565	28								cm
585	29								cm
605	30								cm
625	31								cm
645	32								cm
665	33								cm
685	34								cm
705	35								cm
725	36								cm
745	37								cm
765	38								cm
785	39								cm
805	40								cm
825	41								cm
845	42								cm
865	43								cm
885	44		acoustic panel parking bar (not available)						cm
905	45								cm
925	46								cm
945	47								cm
965	48		acoustic panel (use to be discussed)*						cm
985	49								cm
1005	50								cm
1025	51								cm
1045	52								cm
1065	53								cm
1085	54								cm
1105	55		horizon lights						cm
1125	56								cm
1145	57								cm
1165	58								cm
1185	59								cm
1205	60								cm
1225	61								cm
1245	62								cm
1265	63								cm
1285	64								cm
1305	65		drop on rail						cm
1325	66		drop						cm
1345	67		drop						cm
1365	68		acoustic panel parking bar (not available)						cm
1385	69								cm
dist.									
from center	motor number	axis number	Side bars contents	low	mark 1	mark 2	mark 3	high	
1040	Li 1 92								cm
1060	Li 2 91								cm
1040	Re 1 93								cm
1060	Re 2 94								cm

2 electric w inches and 8 chain hoists  
**\*Please note: Acoustic panel motors max speed is 0,75m/s with a different ac/deceleration than the other motors**